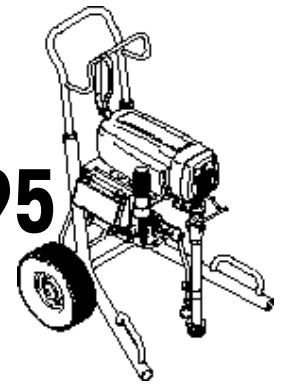




# ULTRA<sup>®</sup> MAX II 695/795/1095 MARK V<sup>™</sup> - MARK X<sup>™</sup>

## Quick Operator's Guide



### ⚠ WARNING

This procedure is for water-base paints and flushing fluids. For solvent-base paints and flushing fluids (i.e. mineral spirits), you must read Fire and Explosion Hazard in the Operating Instructions. \* check the Graco operations manual delivered with the unit for more details.

### SETUP



Connect hose to sprayer and gun.  
Tighten hose connections with wrench.



Unscrew tip & guard from gun.



Fill throat packing nut with TSL<sup>™</sup>  
to prevent premature packing wear.



Make sure power  
switch is set to OFF.



Plug electrical cord  
into grounded outlet.



Turn prime valve  
to Prime position (down).



Place siphon tube in pail  
partially filled with water.



Turn pressure control knob  
to lowest pressure, and set  
power switch to ON.



Increase pressure until  
sprayer starts and water  
runs out of prime tube.  
Let water run out of  
prime tube for 15 seconds.



Decrease pressure  
until sprayer stops.



Turn prime valve  
to Spray position  
(horizontal).



Make sure safety  
lever of gun is OFF.



Aim gun at inside  
wall of water pail  
and squeeze trigger.



Increase pressure  
until sprayer starts.  
Keep gun triggered into  
water pail for 1 minute.  
Release trigger.



Turn prime  
valve to Prime  
position (down).



Place siphon tube in paint  
pail, but leave drain tube  
in water pail.



Aim gun at inside  
wall of water pail,  
and squeeze trigger.



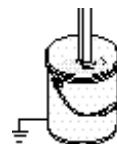
Increase pressure until  
sprayer starts and paint  
comes out of drain tube.



Keeping gun triggered into  
water pail, turn prime valve  
to Spray position (horizontal).



When paint comes out of gun,  
release trigger and turn safety  
lever of gun to ON.



Transfer drain  
tube to paint pail.



Screw tip & guard onto gun, making sure  
arrow-shaped handle of tip is pointing forward.  
You can reverse this tip to quickly clear clogs  
without taking it apart.

### CHOOSE THE RIGHT TIP (286-XXX) & FILTER



	Ink/Stains	Laquers	Enamels	Urethanes	Acrylics	Emulsions	Latex	Block Filters	Innumerous												Fan Width
	109	111	113	115		119	121														5 cm
	207	209	211	213	215	217	219	221	223	225						235					10 cm
	307	309	311	313	315	317	319	321	323	325	327		331								15 cm
		409	411	413	415	417	419	421	423	425	427	429		433	435	439	443		451	455	20 cm
			509	511	513	515	517	519	521	523	525	527	529	531	533		543		551	555	25 cm
				609	611	613	615	617	619	621	623	625	627	629	631	633	635		645	655	30 cm
									721	723	725		729			735					35 cm
					815	817	819	821				827		831	833	835					40 cm
						917										935					45 cm
Flow Rate (l/min.)	20		.33	.49	.69	.91	1.17	1.47	2.15	2.54	2.96	3.42	3.90	4.42	4.98	6.18	7.51	8.23	10.57	12.99	
Pump Filter (mesh)	200 (orange)		100 (blue)		60 (black)				30 (grey)					none							
Gun Filter (mesh)	100 (orange)		100 (orange)		60 (blue)									none							

# SPRAYING



Turn safety lever of gun to OFF.



Point gun at area to be sprayed about 30 cm from surface, and begin moving gun before triggering.

A good spray pattern is evenly distributed as it hits surface. Set pressure just high enough to spray without heavy edges.

Use smaller tip size for thinner material and a larger tip size for thicker material if pressure adjustment cannot achieve even spray pattern.



# SHUTDOWN AND CLEANUP \* for AutoClean<sub>2</sub><sup>™</sup>: see bottom of this page



Set power switch to OFF.



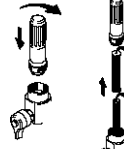
Trigger gun until pressure is relieved.



Turn prime valve to Prime position (down).



Remove gun filter assembly.



Remove manifold filter and spacer.



Assemble gun without filter.



Unscrew inlet screen from siphon tube.



Unscrew tip & guard from gun. Clean gun filter, inlet screen, tip, guard and manifold filter with water and brush.



Place drain tube and siphon tube in pail of water.



Turn pressure control knob to lowest setting, set power switch to ON, and increase pressure until sprayer starts. Let sprayer run and flush itself for 2 minutes.



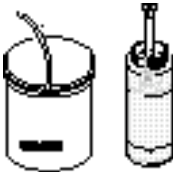
Keeping gun triggered into water pail, turn prime valve to Spray position (horizontal).



Keep gun triggered into pail for 1 minute, until water coming out of gun is clean.



Set power switch to OFF, turn pressure control knob to lowest setting, and turn prime valve to Prime position (down).



Place drain tube in waste pail and siphon tube in container of Pump Armor<sup>™</sup>



Set power switch to ON, and increase pressure until sprayer starts.



As soon as Pump Armor comes out of drain tube, set power switch to OFF.



Screw inlet screen onto siphon tube, replace manifold filter and spacer, and assemble gun with filter, tip and guard.

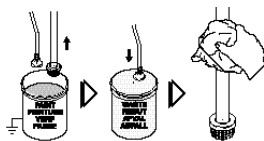


Wipe outside of sprayer, hose and gun with rag soaked in water or mineral spirits.



Fill throat packing nut with TSL<sup>™</sup>

# AUTOCLEAN<sub>2</sub><sup>™</sup> GUIDE



Remove suction and drain tubes from paint. Place drain tube into waste pail and wipe suction tube clean.



Place suction tube in appropriate cleaning fluid.



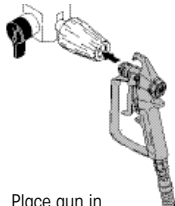
Close drain valve. Switch power ON.



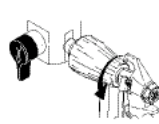
To save paint from hose and pump, trigger gun into paint pail and increase pressure. When cleaning fluid appears, release gun trigger.



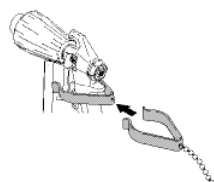
Turn pressure all the way down. Open drain valve.



Place gun in AutoClean connector.



Screw connector onto gun.



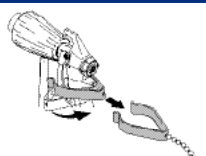
Slide open end over back of handle.



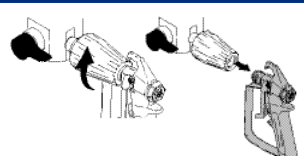
Rotate trigger lock clip 90° to lock trigger open.



Press display button until timer appears and turn pressure control knob to highest.



When finished, remove trigger clip from gun handle.



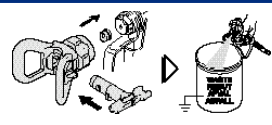
Unscrew connector from gun. Remove gun from connector.



Close drain valve.



With clean fluid, briefly trigger gun into waste pail several times to clear any debris from front of gun.



Install tip and guard and briefly trigger gun into waste pail to clean tip. Reverse tip if necessary.