

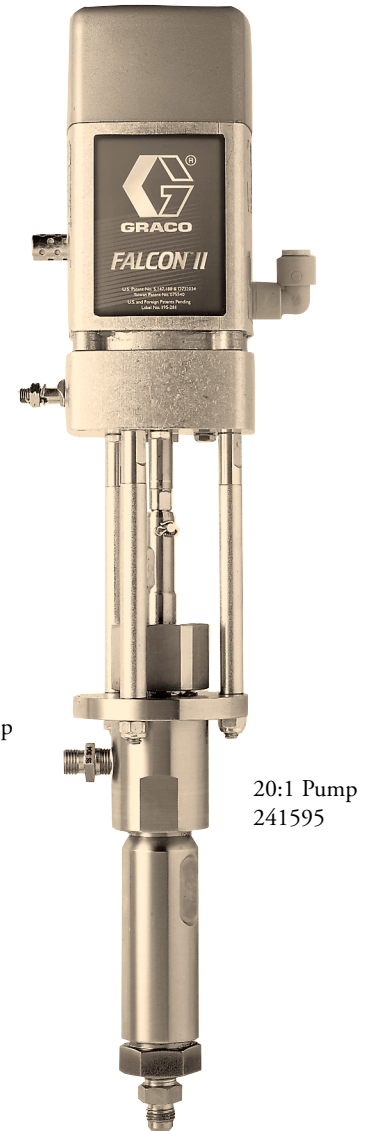
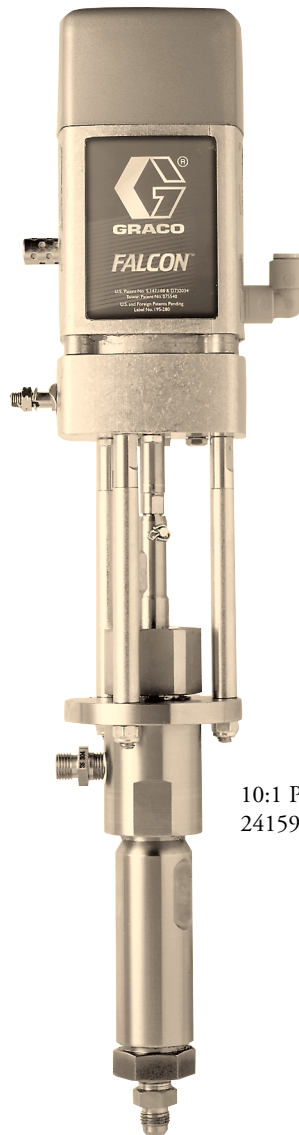


First choice when  
quality counts.™

# Falcon™ and Falcon II

**Air-Assisted  
pump designed  
for a variety of  
wood industry  
applications**

- **Pressure output capacity:  
Falcon - 69 bar  
(7 MPa)  
Falcon II - 102 bar  
(10 MPa)**
- **2-ball check pump  
operation for  
uniform flow**
- **Excellent abrasion  
and corrosion  
resistance using  
Graco Severe-Duty™  
wear parts**
- **Wetted parts of  
stainless steel to  
meet wide range  
of fluid needs**
- **Divorced air motor  
eliminates fluid  
and fume  
contamination,  
reducing  
maintenance**



The Falcon 10:1 and Falcon II 20:1 pumps are recommended for air-assisted spraying which combines the advantages of air spray and airless spray, providing significant benefits. These pumps deliver the pressure needed to atomize coatings from light to medium-heavy viscosity with a full spray pattern.

## **Typical Fluids Handled**

- Catalyzed lacquers
- Polyurethanes
- Waterborne lacquers
- Primers, stains

## **Typical Applications**

- Wood furniture and cabinetry
- Wood windows and doors
- Custom wood shops
- General metal fabrication

# Technical Specifications

Maximum air inlet pressure .....	10 bar (1 MPa)
Stroke length .....	57 mm
Effective air motor piston area	
Falcon .....	20.3 cm <sup>2</sup>
Falcon II .....	42.6 cm <sup>2</sup>
Effective air motor piston diameter	
Falcon .....	50.8 mm
Falcon II .....	73.7 mm
Maximum motor operating temperature .....	54°C
Air inlet size .....	3/8 npt(f)
Approximate weight	
Falcon .....	2.9 kg
Falcon II .....	2.8 kg
Flow rate at 60 cpm .....	1.14 liters
Volume per cycle .....	19 ml
Instruction manual .....	308995

## Key to Performance Charts for Falcon and Falcon II

Air Pressures:

A = 7 bar (0.7 MPa)

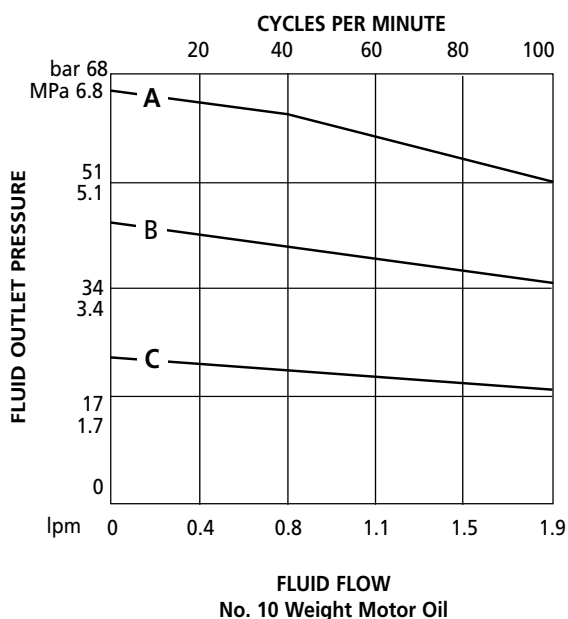
B = 4.9 bar (0.49 MPa)

C = 2.8 bar (0.28 MPa)

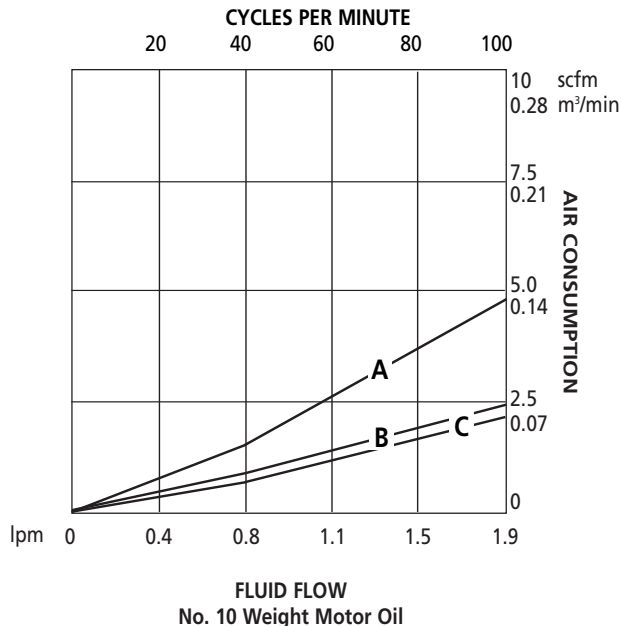
Performance tested in No. 10 weight motor oil (65 cp 20° C)

## Performance Chart: Falcon Pump (241594), 10:1 Ratio

Fluid Flow



Air Consumption



# Ordering Information for Falcon and Falcon II Pumps

Order number includes motor and pump lower assembly

Order Nos.	Falcon, 10:1 241594	Falcon II, 20:1 241595
<b>Pump Lower</b>		
Part No.	241516	241516
Construction	SST	SST
Standard Seal Repair Kit	241597	241597
Construction	Teflon	Teflon
Throat Seal Repair Kit	241827	241827
Construction	UHMWPE, Delrin	UHMWPE, Delrin
<b>Motor</b>		
Repair Kit	241833	241834
Valve Repair Kit	241884	241884

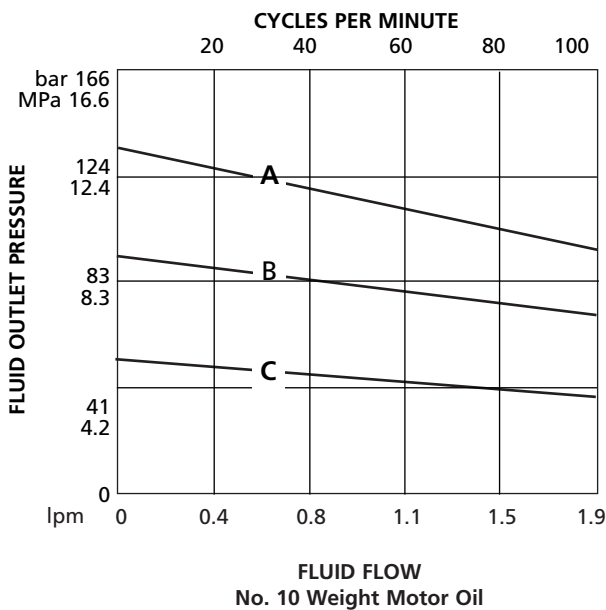
## SERVICE PARTS INFORMATION

Pump Lower Part Nos.	241516	241516
Displacement Rod	194756	194756
Construction	SST	SST
Cylinder	194760	194760
Construction	SST	SST
Intake Valve (order separate part numbers)		
Intake Ball	105445	105445
Intake Valve Seat	195003	195003
Piston Valve (order separate part numbers)		
Piston Ball	101947	101947
Seat	194761	194761

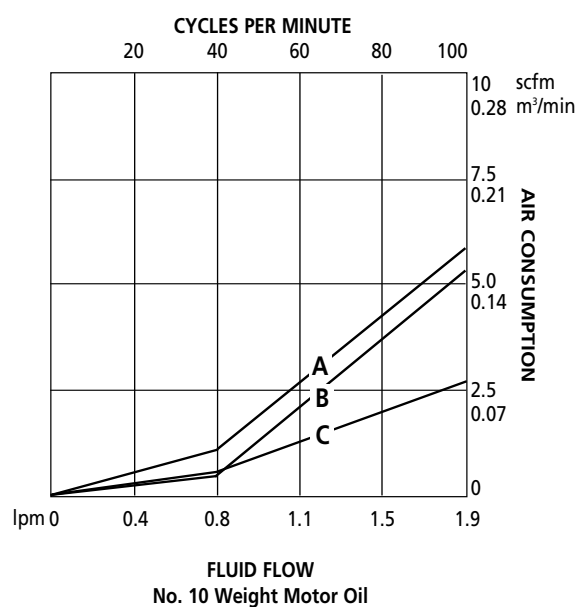
Teflon® is a registered trademark of Du Pont.

## Performance Chart: Falcon II (241595) Pump, 20:1 Ratio

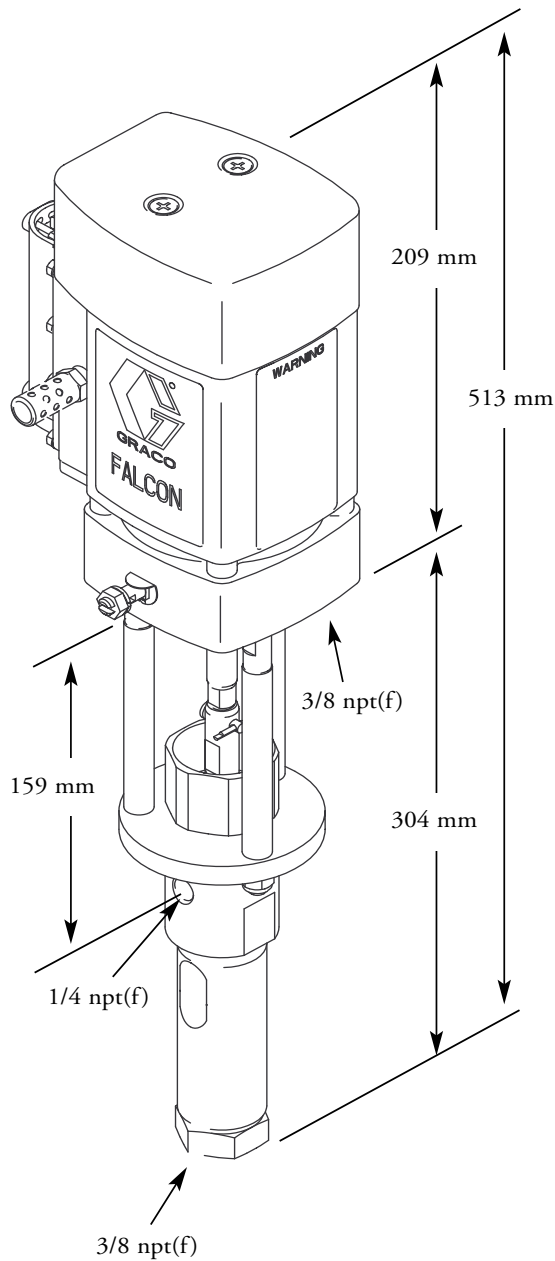
Fluid Flow



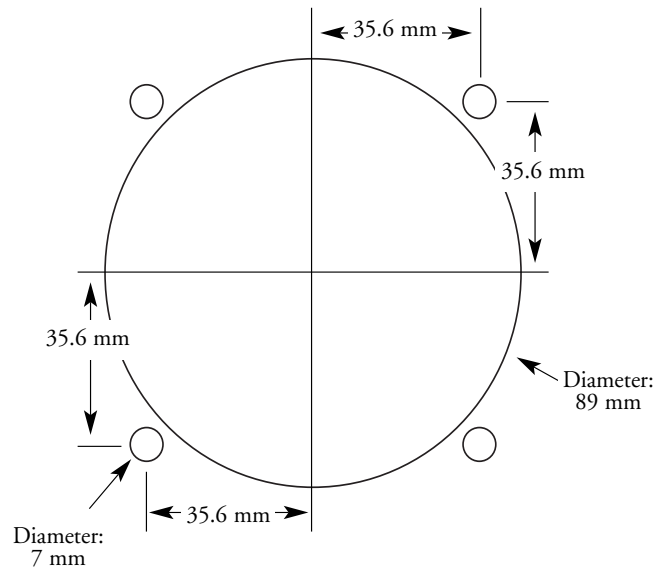
Air Consumption



## Dimensions



## Mounting Hole Layout



## Accessories

- 241597 Teflon Throat/Piston Repair Kit**  
Includes a Teflon seal. For an UHMWPE seal, order 115408, sold separately.
- 241827 Throat Seal Repair Kit**
- 241828 Teflon Piston Repair Kit**  
Includes a Teflon seal. For an UHMWPE seal, order 115408, sold separately.
- 241830 Teflon Piston Repair Kit**  
Includes a Teflon seal. For an UHMWPE seal, order 115408, sold separately.
- 241829 Intake Repair Kit**

Graco is registered to I.S. EN ISO 9001.  
Any and all specifications contained herein are subject to change without notice.

 **GRACO**® GRACO N.V.  
Slakweidestraat 31  
B-3630 Maasmechelen  
Tel: (32) 89 770 700 • Fax: (32) 89 770 777  
www.graco.com (US) • www.graco.be (Europe)