

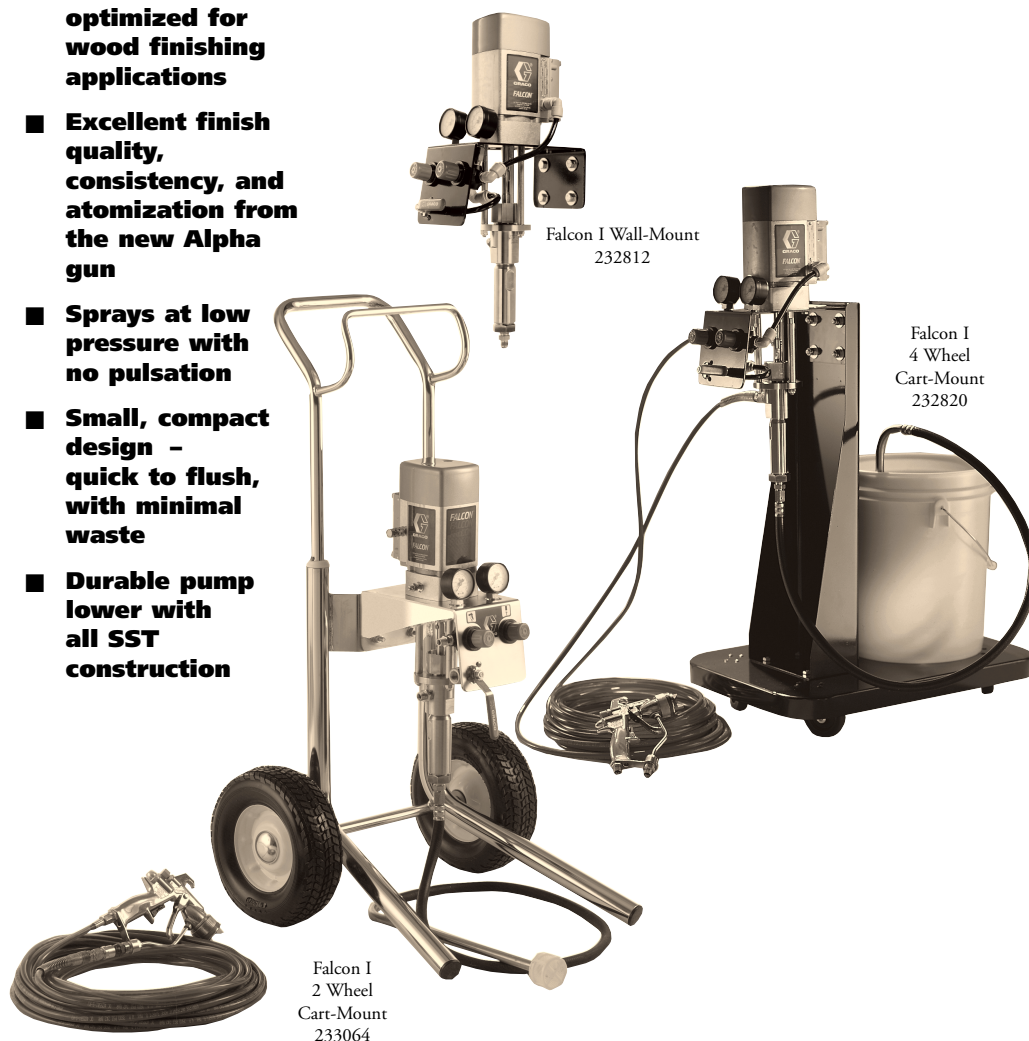


# Falcon™ and Falcon II

## Air-Assisted Packages

**Low cost and  
excellent  
finish quality  
air-assisted  
package**

- **Low cost unit optimized for wood finishing applications**
- **Excellent finish quality, consistency, and atomization from the new Alpha gun**
- **Sprays at low pressure with no pulsation**
- **Small, compact design – quick to flush, with minimal waste**
- **Durable pump lower with all SST construction**



Graco's new Falcon Spray Packages meet worldwide requirements for a low cost unit providing excellent finish quality with high efficiency and speed.

The small, compact design of the Falcon sprayers keep flushing time and waste to a minimum, making these units ideal for low volume or frequent color changing applications.

### **Typical Fluids Handled**

- Catalyzed lacquers
- Polyurethanes
- Waterborne lacquers
- Primers, stains

### **Typical Applications**

- Wood furniture and cabinetry
- Wood windows and doors
- Custom wood shops
- General metal fabrication

## Technical Specifications

### Maximum fluid working pressure

Falcon models ..... 70 bar (7 MPa)

Falcon II models ..... 100 bar (10 MPa)

### Maximum air input pressure

Falcon models ..... 7 bar (10.7 MPa)

Falcon II models ..... 4.7 bar (0.5 MPa)

### Maximum gun

Air input pressure ..... 3.5 bar (0.35 MPa)

### Ratio

Falcon models ..... 10:1

Falcon II models ..... 20:1

Maximum flow rate at 60 cpm ..... 1.1 l/min.

Maximum operating temperature ..... 66°C

### Weight

Falcon and Falcon II wall-mount ..... 11.3 kg

Falcon 2 wheel cart-mount ..... 27 kg

Falcon 4 wheel cart-mount ..... 20 kg

Instruction manual ..... 308994

### Dimensions Key

Falcon (Wall-Mount)

A = 538 mm

B = 330 mm

C = 432 mm

D = 139 mm

E = 269 mm

Falcon (2 Wheel Cart-Mount)

A = 980 mm

B = 330 mm

C = 432 mm

D = 528 mm

E = 424 mm

Falcon (4 Wheel Cart-Mount)

A = 955 mm

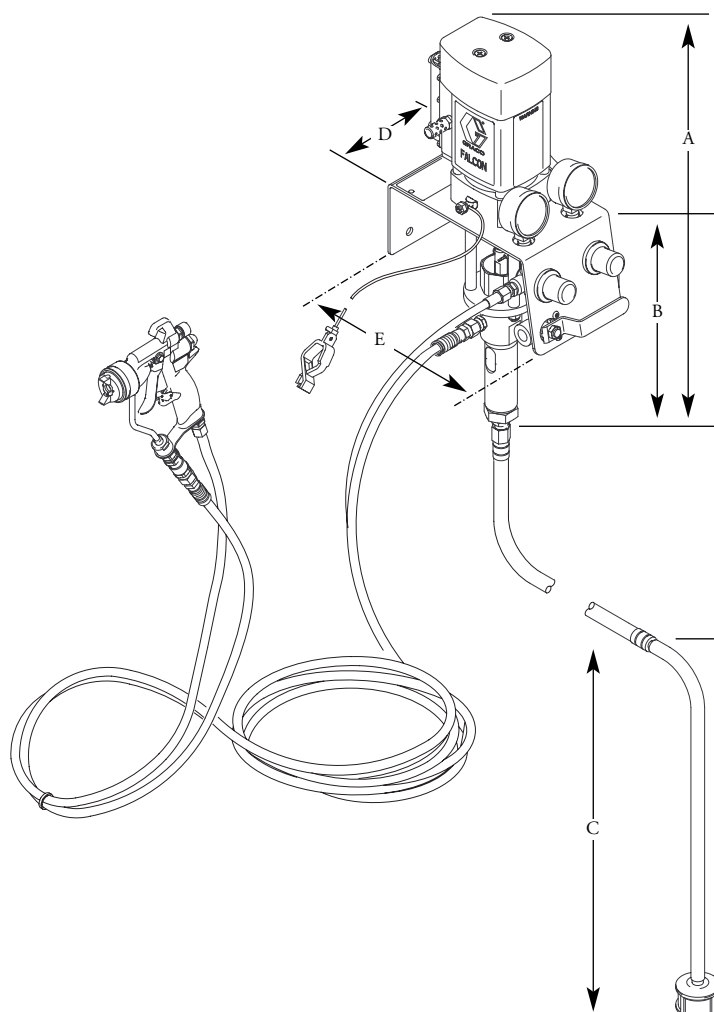
B = 330 mm

C = 432 mm

D = 406 mm

E = 640 mm

## Dimensions *See Dimensions Key for measures.*



## Sound Pressure Levels dB(A) *(measured at 1 meter from unit)*

Air Motor	Input Air Pressures at 20 cycles per minute		Input Air Pressures at 30 cycles per minute
	2.8 bar (0.28 MPa)	4.8 bar (0.48 MPa)	7 bar (0.7 MPa)
Falcon	66.47 dB(A)	67.53 dB(A)	70.81 dB(A)
Falcon II	68.40 dB(A)	70.34 dB(A)	74.56 dB(A)

## Sound Power Levels dB(A) *(tested in accordance with ISO 9614-2)*

Air Motor	Input Air Pressures at 20 cycles per minute		Input Air Pressures at 30 cycles per minute
	2.8 bar (0.28 MPa)	4.8 bar (0.48 MPa)	7 bar (0.7 MPa)
Falcon	70.06 dB(A)	71.31 dB(A)	74.78 dB(A)
Falcon II	71.47 dB(A)	70.72 dB(A)	77.38 dB(A)

Form No. 305-989 E

Rev. C 04/00

## Alpha Spray Gun Tip Selection Chart

Note: to avoid a skin injection hazard, only these spray tip sizes are offered. Special tip sizes are not available.

Orifice Size mm	Fan Width at 300 mm mm	Fluid Output* Fluid Oz./Min. (Liters/Min.)			
		Viscosity: Light to Medium    Heavy		Part No.	
0.178**	100-150	0.1		GGW207	
	150-200			GGW307	
0.229**	100-150	0.2		GGW209	
	150-200			GGW309	
	200-250			GGW409	
	250-300			GGW509	
0.279**	50-100	0.3		GGW111	
	100-150			GGW211	
	150-200			GGW311	
	200-250			GGW411	
	250-300			GGW511	
	300-350			GGW611	
0.330	100-150	0.4		GGW213	
	150-200			GGW313	
	200-250			GGW413	
	250-300			GGW513	
	300-350			GGW613	
	350-400			GGW713	
0.381	100-150	0.5		GGW215	
	150-200			GGW315	
	200-250			GGW415	
	250-300			GGW515	
	300-350			GGW615	
	350-400			GGW715	
0.432	400-460	0.7	0.5		GGW815
	100-150				GGW217
	150-200				GGW317
	200-250				GGW417
	250-300				GGW517
	300-350				GGW617
	350-400				GGW717
	400-460				GGW817
0.483	457-508	0.8	0.6		GGW917
	150-200				GGW319
	200-250				GGW419
	250-300				GGW519
	300-350				GGW619
	350-400				GGW719
0.533	400-460	1.0	0.8		GGW819
	457-508				GGW919
	200-250				GGW421
	250-300				GGW521
	300-350				GGW621
	350-400				GGW721
	400-460			GGW821	
	457-508			GGW921	

\* Fluid output at 41 bar, 4.1 MPa

\*\* These part numbers include a 150 mesh tip filter in housing.  
Order 241804 to replace filter (package of 10).

Note:

Fluid output (Q) at other pressures (P) can be calculated by this formula:

$$Q = (0.041) (QT) (\sqrt{P})$$

Where QT = fluid output (fluid oz./min.) from the above table for the selected orifice size.

## Accessories

**243340 SST Pail Cover with SST Agitator**  
20 liter.

**243606 2 Wheel Pail Cart** (pail not included)  
Mounting hardware included.

**241646 4 Wheel Pail Cart** (pail not included)  
Mounting hardware included.

**Air Line, Quick-Disconnect**  
**208536** Coupling, female, 1/4 npt(f)  
**169967** Pin, male, 1/4 npt(f)

**241882 Accessory Air Cap**  
For use with low viscosity fluids and low fluid flow rates.

**241563 Alpha AA HVLP Air Cap**  
Converts standard gun to HVLP compliancy.  
Requires HVLP Verification Kit.

**241644 HVLP Verification Kit**  
For use in checking air cap air pressures at various supply air pressures. NOT to be used for actual spraying. Note: to be compliant, the atomizing air pressure must not exceed 0.7 bar (70 kPa).

**238563 Gun Inlet Fluid Filter Kit**  
Package of 3. 60 mesh (0.009 gap spacing) to replace the standard 100 mesh (0.005 gap) filter for coarser filtering.

**241804 Tip Filter Kit**  
Package of 10. 150 mesh.  
Comes standard with tip sizes 0.007 inch, 0.009 inch, and 0.011 inch. Fits other tip sizes but need to order separately.

## Ordering Information for Falcon Packages

All packages include an Alpha gun and tip (see note below), and 7.6 m air and fluid hose, and a fluid swivel at the gun inlet.

### Falcon 10:1

#### Wall-Mount

- 232810** with Carbide Alpha Gun
- 232811** with Plastic Alpha Gun
- 232812** Bare Pump - no gun, hoses, or siphon tube

#### Stand-Mount

- 232833** with Carbide Alpha Gun
- 232834** with Plastic Alpha Gun
- 232835** Bare Pump - no gun, hoses, or siphon tube

#### 2Wheel Cart-Mount

- 233064** with Carbide Alpha Gun
- 233065** with Plastic Alpha Gun

#### 4Wheel Cart-Mount

- 232820** with Carbide Alpha Gun
- 232821** with Plastic Alpha Gun
- 232822** Bare Pump - no gun, hoses, or siphon tube

### Falcon II 20:1

#### Wall-Mount

- 232815** with Carbide Alpha Gun
- 232816** with Plastic Alpha Gun
- 232817** Bare Pump - no gun, hoses, or siphon tube

#### Stand-Mount

- 232836** with Carbide Alpha Gun
- 232837** with Plastic Alpha Gun
- 232838** Bare Pump - no gun, hoses, or siphon tube

### Falcon Bare Pumps

Includes: Severe-Duty rod and cylinder

- 241594** Falcon 10:1
- 241595** Falcon II 20:1

Note: Falcon 10:1 packages include a GGW413 tip with an additional tip of choice. Falcon 20:1 packages include a GGW415 tip with an additional tip of choice.

## Ordering Information for Alpha Spray Gun

### Carbide models recommended for:

pigmented, waterborne, and higher viscosity materials.

### Plastic models recommended for:

acid-catalyzed materials and low viscosity lacquers and stains.

### Standard Alpha Spray Gun

#### 241508 Carbide Model

Includes: spray gun with carbide ball/seat, air cap, tip of choice, and in-line 100 mesh fluid filter.

#### 241510 Plastic Model

Includes: spray gun with plastic ball/seat, air cap, tip of choice, and in-line 100 mesh fluid filter.

### HVLP Alpha Spray Gun

#### 241509 Carbide Model

Includes: spray gun with carbide ball/seat, HVLP air cap, tip of choice, and in-line 100 mesh fluid filter.

#### 241511 Plastic Model

Includes: spray gun with plastic ball/seat, HVLP air cap, tip of choice, and in-line 100 mesh fluid filter.

Graco is registered to I.S. EN ISO 9001.

Any and all specifications contained herein are subject to change without notice.



GRACO N.V.  
Slakweidestraat 31  
B-3630 Maasmechelen  
Tel: (32) 89 770 700 • Fax: (32) 89 770 777  
www.graco.com (US) • www.graco.be (Europe)